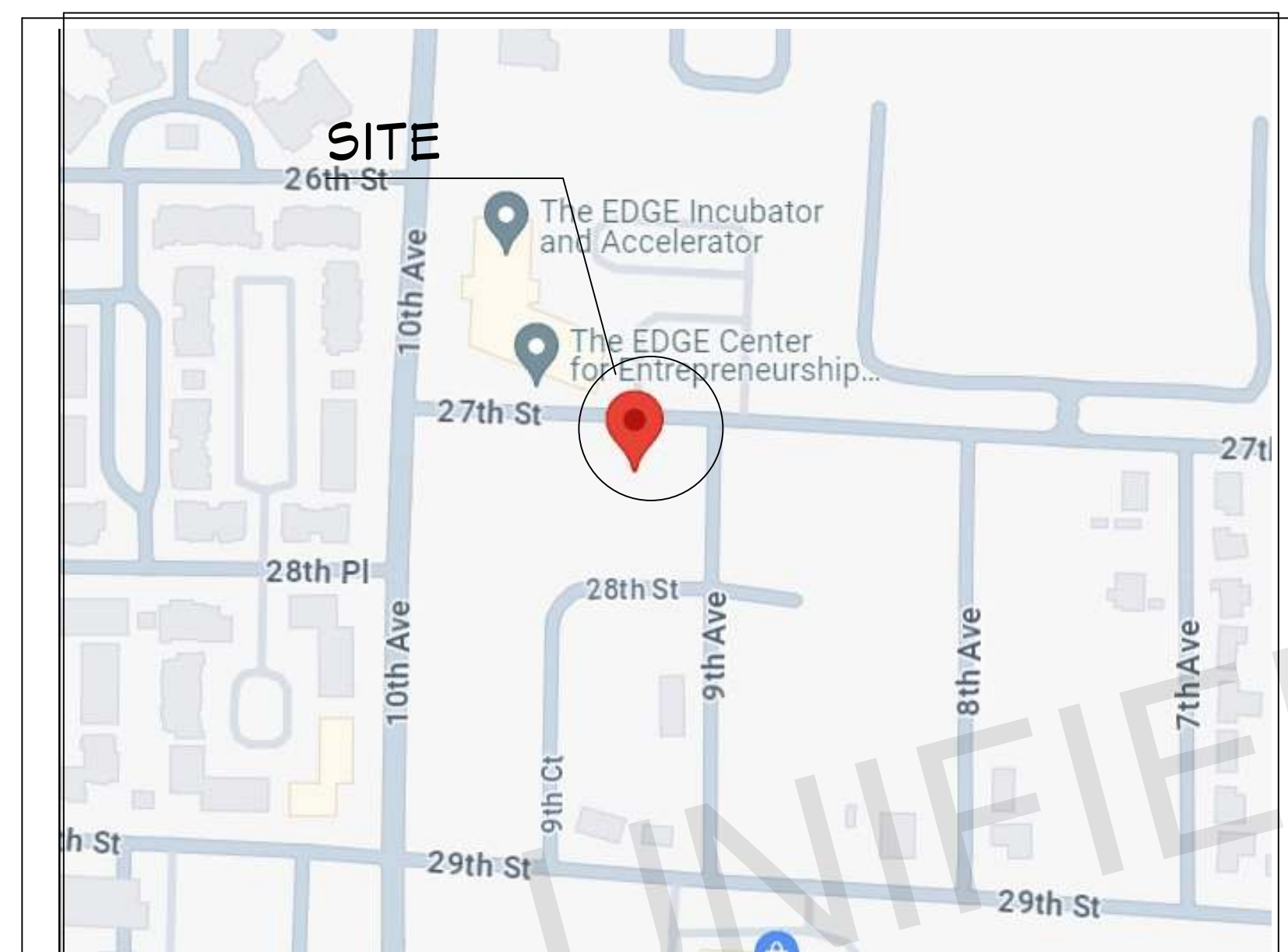


COMMERCIAL BUILDING- HAIR SALOON



VICINITY MAP
NOT TO SCALE



RENDERING
FOR ILLUSTRATION ONLY



RENDERING
FOR ILLUSTRATION ONLY

GENERAL NOTES:

THIS PLAN SET, COMBINED WITH THE BUILDING CONTRACT, PROVIDES BUILDING DETAILS FOR THE COMMERCIAL PROJECT. THE CONTRACTOR SHALL VERIFY THAT SITE CONDITIONS ARE CONSISTENT WITH THESE PLANS BEFORE STARTING WORK. WORK NOT SPECIFICALLY DETAILED SHALL BE CONSTRUCTED TO THE SAME QUALITY AS SIMILAR WORK THAT IS DETAILED. ALL WORK SHALL BE DONE IN ACCORDANCE WITH INTERNATIONAL BUILDING CODES AND LOCAL CODES. CONTRACTOR SHALL BE RESPONSIBLE AND BEAR ANY FINES OR PENALTIES FOR CODE, ORDINANCE, REGULATION OR BUILDING PROCESS VIOLATIONS. INSURANCES SHALL BE IN FORCE THROUGHOUT THE DURATION OF THE BUILDING PROJECT.

WRITTEN DIMENSIONS AND SPECIFIC NOTES SHALL TAKE PRECEDENCE OVER SCALED DIMENSIONS AND GENERAL NOTES. THE ENGINEER/DESIGNER SHALL BE CONSULTED FOR CLARIFICATION IF SITE CONDITIONS ARE ENCOUNTERED THAT ARE DIFFERENT THAN SHOWN, IF DISCREPANCIES ARE FOUND IN THE PLANS OR NOTES, OR IF A QUESTION ARISES OVER THE INTENT OF THE PLANS OR NOTES. CONTRACTOR SHALL VERIFY AND IS RESPONSIBLE FOR ALL DIMENSIONS (INCLUDING ROUGH OPENINGS). ALL TRADES SHALL MAINTAIN A CLEAN WORK SITE AT THE END OF EACH WORK DAY.

PLEASE SEE ADDITIONAL NOTES CALLED OUT ON OTHER SHEETS.

BUILDING DESIGN AND CODE DATA:

NOTE: THIS WAS A PURPOSE DRAWING Branch Circuitry and Panel designations to be designed and installed by certified local electrician. L.S. (NFPA 101 LIFE SAFETY CODE) AS APPLICABLE.

APPLICABLE BUILDING CODES:
2021 International Residential Building Code
2021 International Building Code
2021 International Existing Building Code
2021 International Plumbing Code
2021 International Mechanical Code
2021 International Fuel Gas Code
2021 International Fire Code
2020 National Electrical Code

CONSTRUCTION TYPE: (BASED ON CHAPTER 5 OF THE IBC)

CONSTRUCTION TYPE: V B
FIRE RATINGS FOR BUILDING ELEMENTS (BASED ON SECTION 602.1 & TABLES 601 & 602 OF THE IBC):

FIRE PROTECTION SYSTEMS SUMMARY:
AN AUTOMATIC FIRE SPRINKLER SYSTEM AS DESCRIBED PER IBC SECTION 903 IS NOT REQUIRED.

OWNER: [REDACTED]
PROJECT: COMMERCIAL BUILDING-SALOON
ADDRESS: [REDACTED]

WATER/SEWER: PUBLIC
BUILDING PERMIT: STATE OF ALABAMA
ZONING: MX-3
COUNTY: TUSGALOOSA
OCCUPANCY CLASSIFICATION USE: BUSINESS (B-2)

LOT AREA: 7162 SQ.FT
BUILDING AREA: 300 SQ.FT

DESIGNER: ASWIN KUMAR
DESIGN CONSULTANT: TRANSFORMATIVE CONSTRUCTION
BUILDER: TBD

TITLE	SHEET
PROJECT SUMMARY	1
GENERAL NOTES	2
SITE & DISTURBANCE PLAN	3
LIFE SAFETY PLAN	4
ADA SHEET	5
FOUNDATION PLAN	6
PROPOSED FLOOR PLAN	7
DOOR AND WINDOW SCHEDULE	8
ELEVATIONS	9
FLOOR AND WALL FRAMING PLAN	10
WALL FRAMING	11
CEILING FRAMING PLAN	12
ROOF & FRAMING PLAN	13
INTERIOR VIEW	14
INTERIOR VIEW	15
3D SECTIONS & SECTIONS	16
DETAILS	17
ELECTRICAL NOTES	18
ELECTRICAL PLAN	19
PLUMBING NOTES	20
PLUMBING PLAN	21
HVAC NOTES	22
HVAC PLAN	23

ARCHITECT SEAL:

PROJECT SUMMARY

SCALE @ 24" X 36"

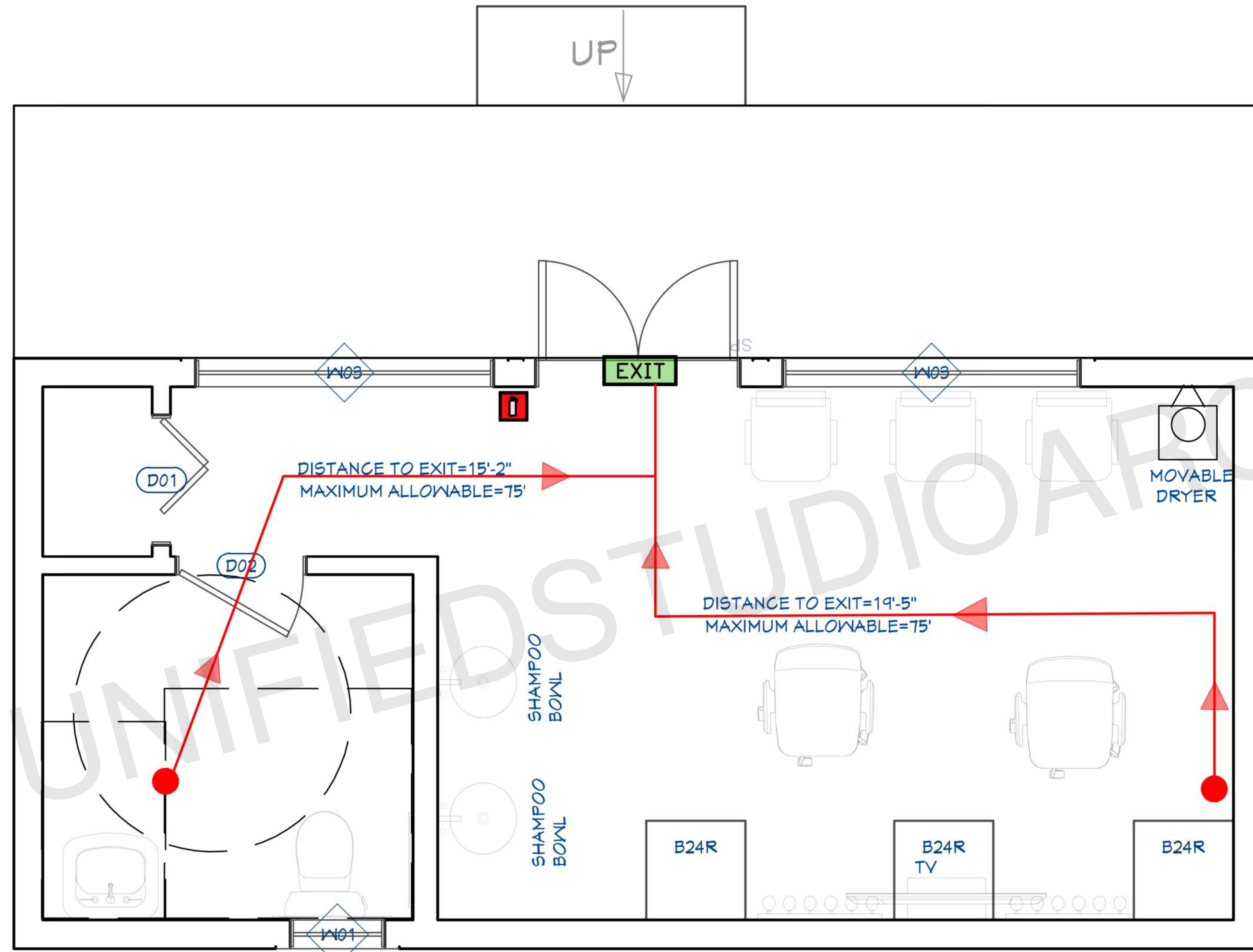
DATE: 10-16-2024

DRAWN BY: AK

8735 Dunwoody Place
#6694, Atlanta, GA 30350
unifiedstudioarchitect.com
Ph: 302 889 1886

SHEET NUMBER

G01



1 LIFE SAFETY PLAN
SCALE: 1/4" = 1'-0"

FIRE SAFETY LEGENDS:

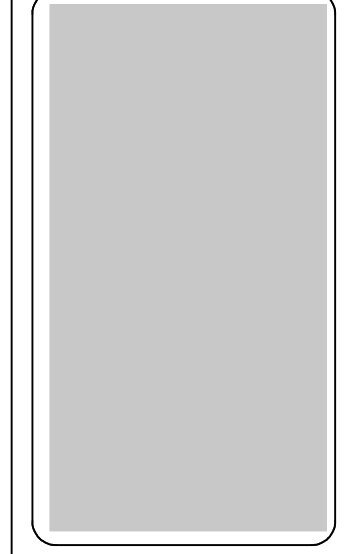
- EXTINGUISHER
- EXIT SIGN WITH EMERGENCY LIGHT
- EGRESS PATH

EGRESS PATH
 DISTANCE TO EXIT = 19'-5"
 MAXIMUM ALLOWABLE FOR (B) CATEGORY = 100'
EGRESS WIDTH
 OCCUPANCY TYPE: B (150SF / PERSON)
 300 SF / 150 = 2
 OCCUPANCY = 2 X (0.2) = 0.4 (36" PROVIDED)

EGRESS AND FIRE NOTES

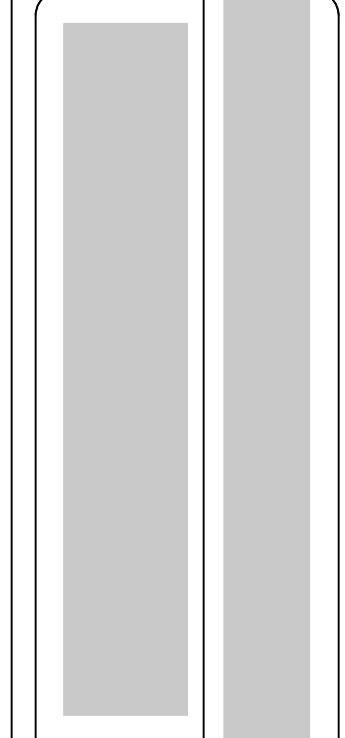
1. FIRE EXTINGUISHER CABINET (FEC) SHALL BE WALL MOUNTED EITHER CABINET TYPE OR WALL HUNG, RATED CABINETS TO MATCH CLASS OF REQUIRED EXTINGUISHER. APPROVED BUILDING NUMBER AND ADDRESS SHALL BE PLACED IN SUCH A POSITION AS TO BE PLAINLY VISIBLE AND LEGIBLE FROM THE STREET OR ROAD FRONTING THE PROPERTY. SAID NUMBERS SHALL CONTRAST WITH THEIR BACKGROUND.
2. AT ANY TIME THE BUILDING IS OCCUPIED, THE MEANS OF EGRESS SHALL BE ILLUMINATED AT AN INTENSITY OF NOT LESS THAN 1 FOOT-CANDLE AT FLOOR LEVEL. IN THE EVENT OF POWER SUPPLY FAILURE, AN EMERGENCY ELECTRICAL SYSTEM SHALL AUTOMATICALLY ILLUMINATE ALL EGRESS COMPONENTS INCLUDING AISLES, EGRESS STAIRWAYS, AND CORRIDORS FOR NOT LESS THAN 90 MINUTES AND SHALL BE EQUIPPED WITH STORAGE BATTERIES.
3. EXIT DOORS SHALL BE OPERABLE FROM THE INSIDE WITHOUT THE USE OF A KEY OR ANY SPECIAL KNOWLEDGE OR EFFORT.
4. PROVIDE TACTILE EXIT SIGNS AT EXIT DOORS
5. DEVICE LOCATIONS ARE DIAGRAMMATIC - REFER TO EGRESS PLANS FOR LAYOUT LOCATIONS AND EXIT ACCESS TRAVEL DISTANCES.
6. EXIT SIGNS - MOUNTED AT STOREFRONT SYSTEMS - MOUNT TO FRAME AT DOOR HEAD
7. CONTRACTOR SHALL PROVIDE TACTILE SIGNS AT LOCATIONS REQUIRED BY ADA

ARCHITECT SEAL:



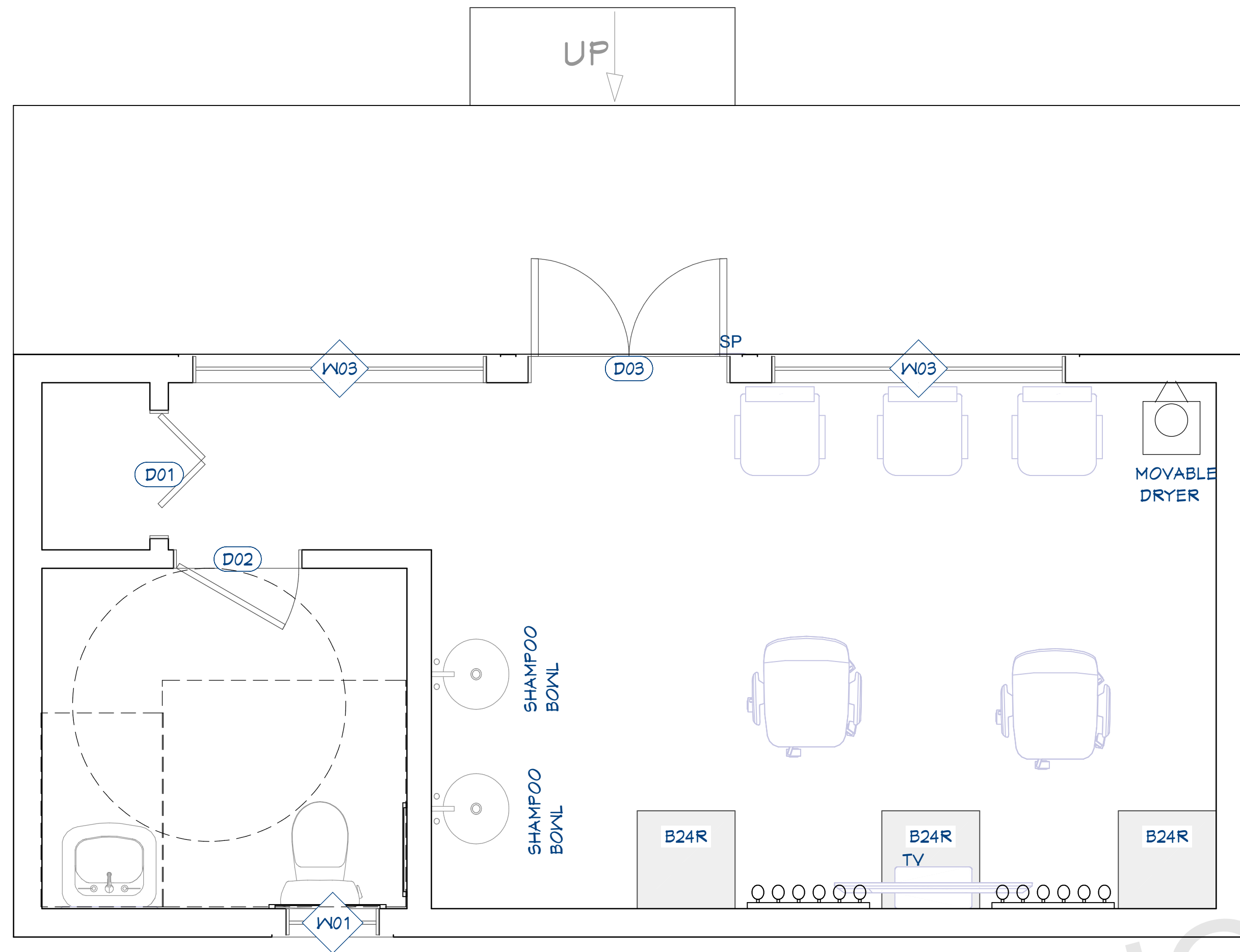
LIFE SAFETY PLAN

SCALE @ 24" X 36"
DATE: 10-16-2024
DRAWN BY: AK

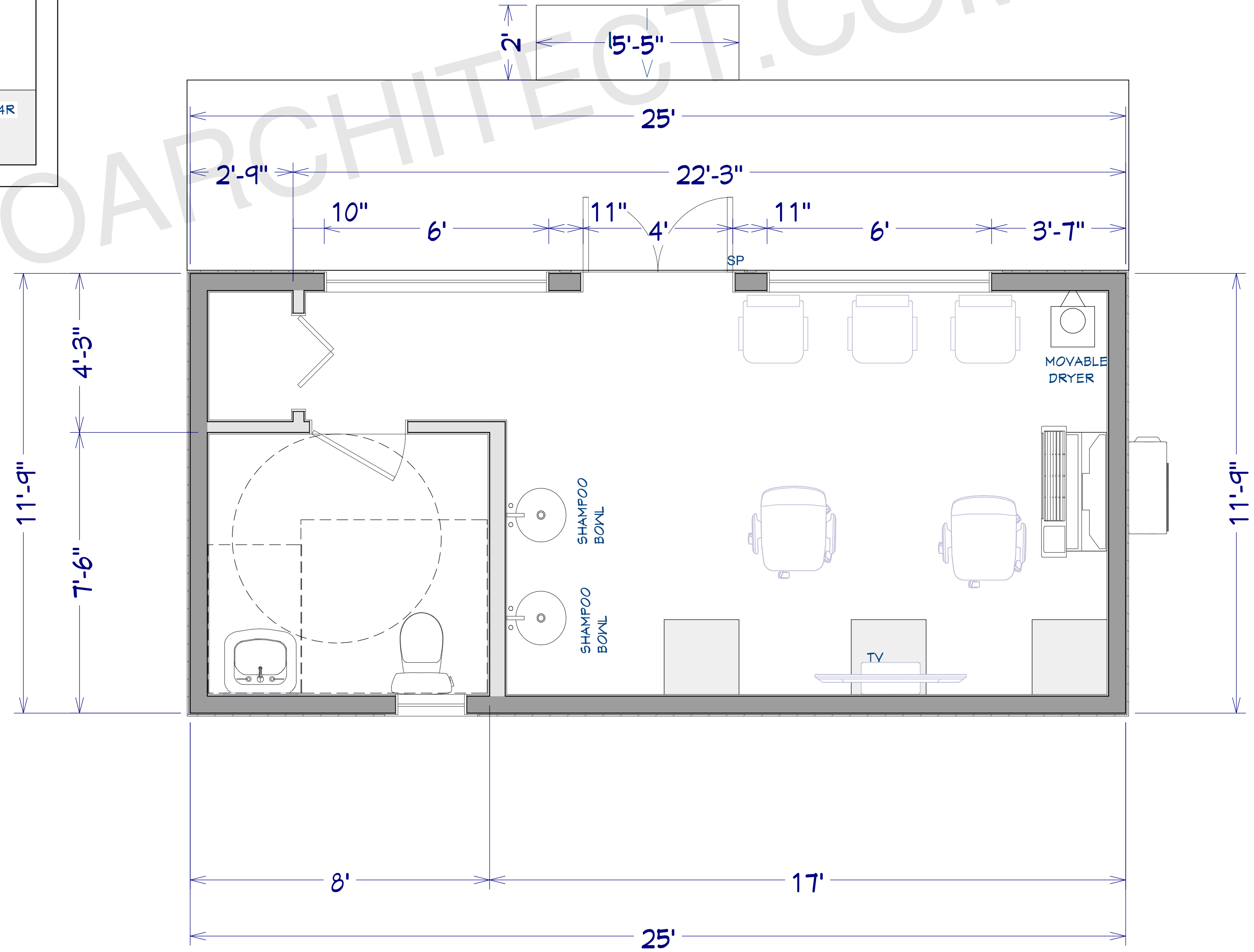


8735 Dunwoody Place
#6694, Atlanta, GA 30350
unifiedstudioarchitect.com
Ph: 302 889 1886

SHEET NUMBER
A02



PROPOSED FLOOR PLAN
1/2"=1'

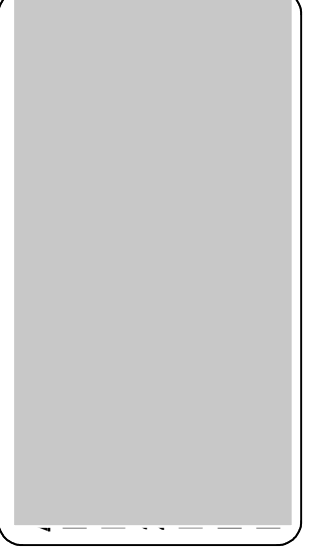


DIMENSIONED PLAN
1/2"=1'

FLOOR PLAN NOTES:

- 1 ALL EXTERIOR DIMENSIONS ARE TO THE FRAMING OR MAIN LAYER.
- 2 CONTRACTOR SHALL VERIFY ALL DIMENSIONS AND IS RESPONSIBLE FOR ALL DIMENSIONS (INCLUDING ROUGH OPENINGS).

ARCHITECT SEAL:

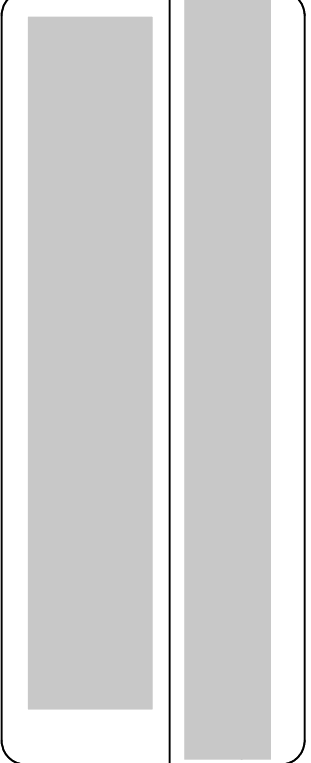


FLOOR PLAN

SCALE @ 24" X 36"

DATE: 10-16-2024

DRAWN BY: AK



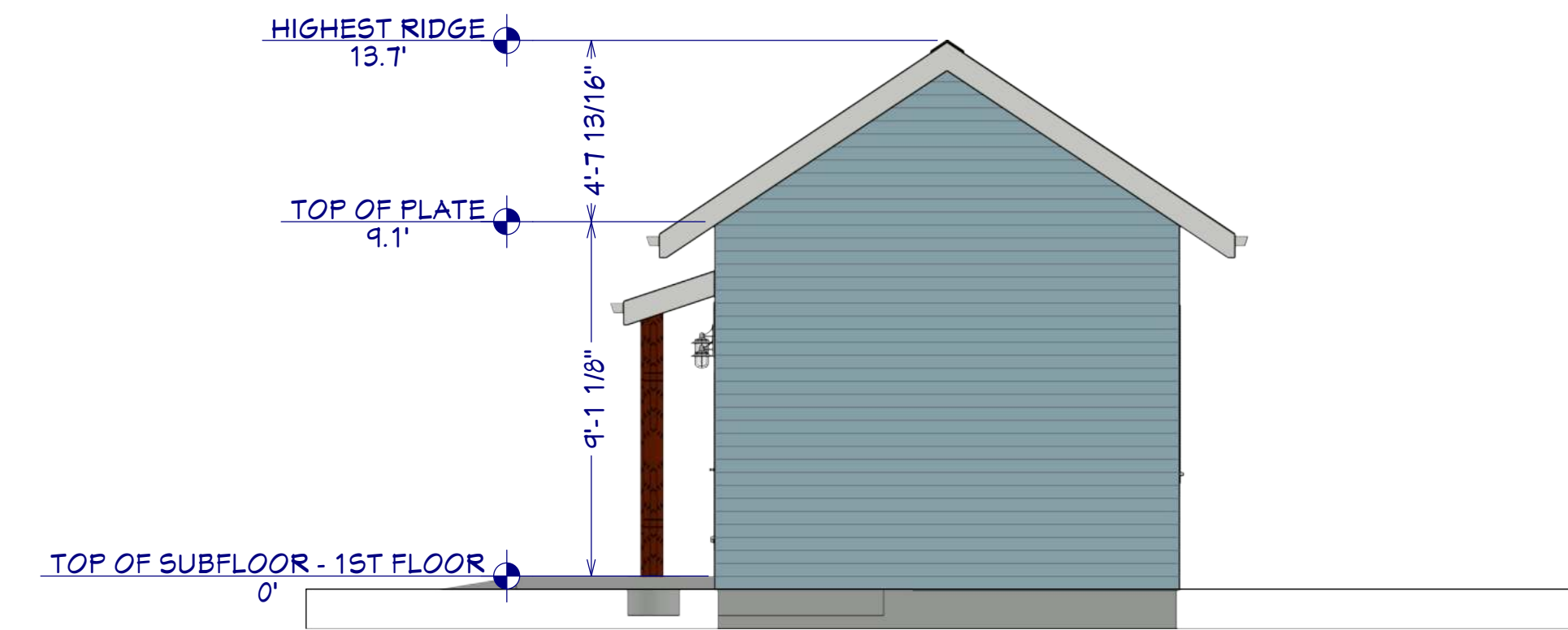
8735 Dunwoody Place
#6694, Atlanta, GA 30350
unifiedstudioarchitect.com
Ph: 302 889 1886

SHEET NUMBER

A03



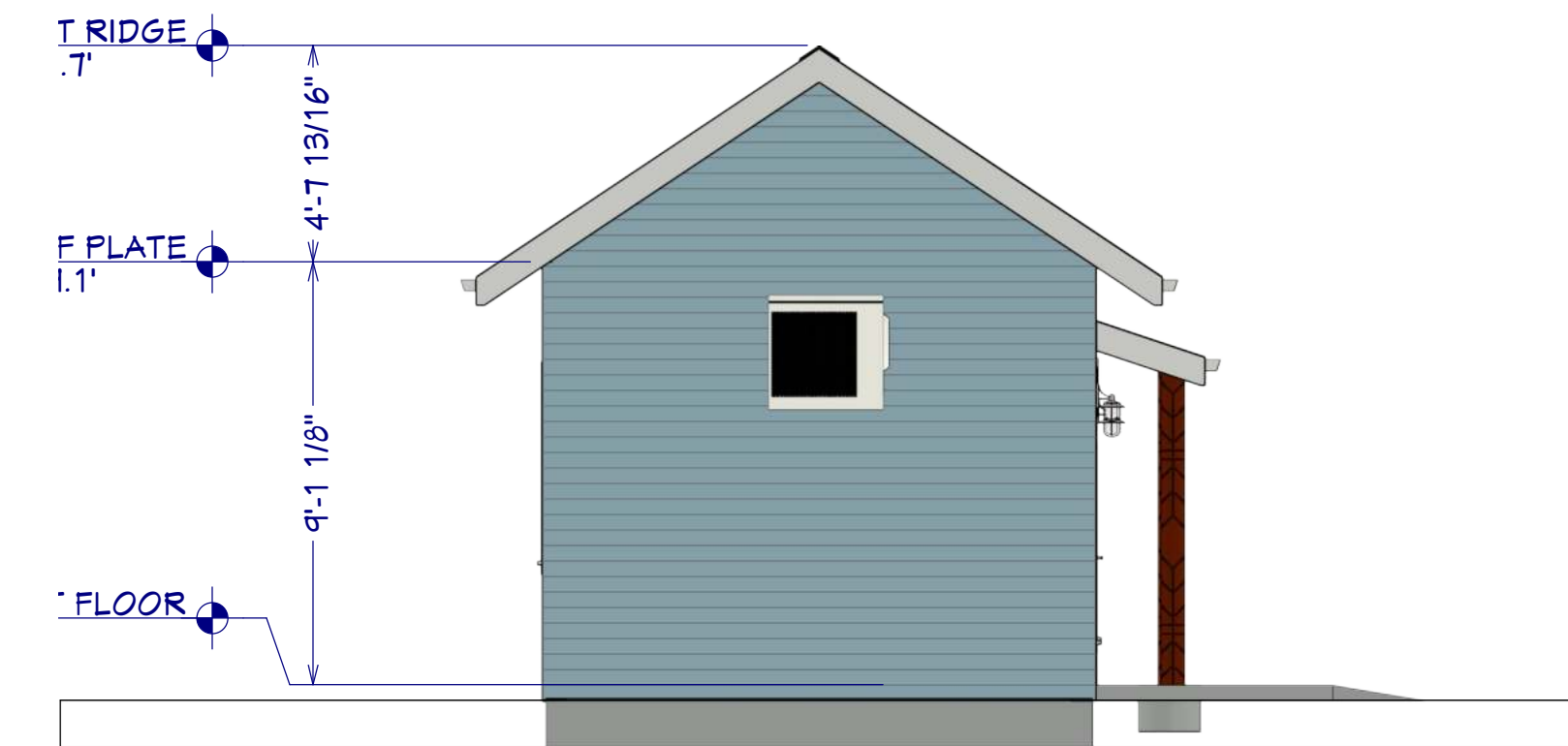
FRONT ELEVATION
1/4"=1'



RIGHT SIDE ELEVATION
1/4"=1'



REAR ELEVATION
1/4"=1'



LEFT SIDE ELEVATION
1/4"=1'

ARCHITECT SEAL:

ELEVATION

SCALE @ 24" X 36"

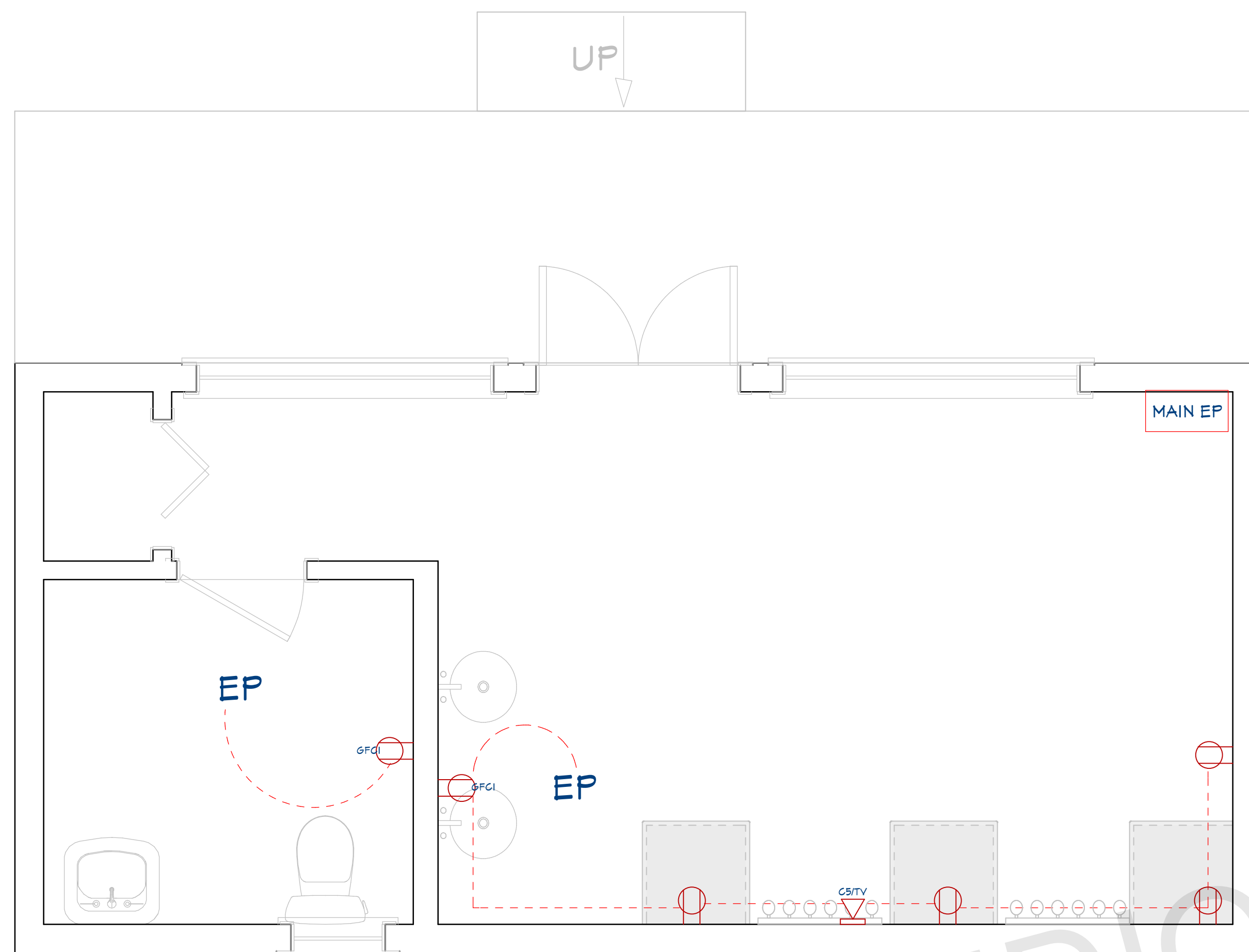
DATE: 10-16-2024

DRAWN BY: AK

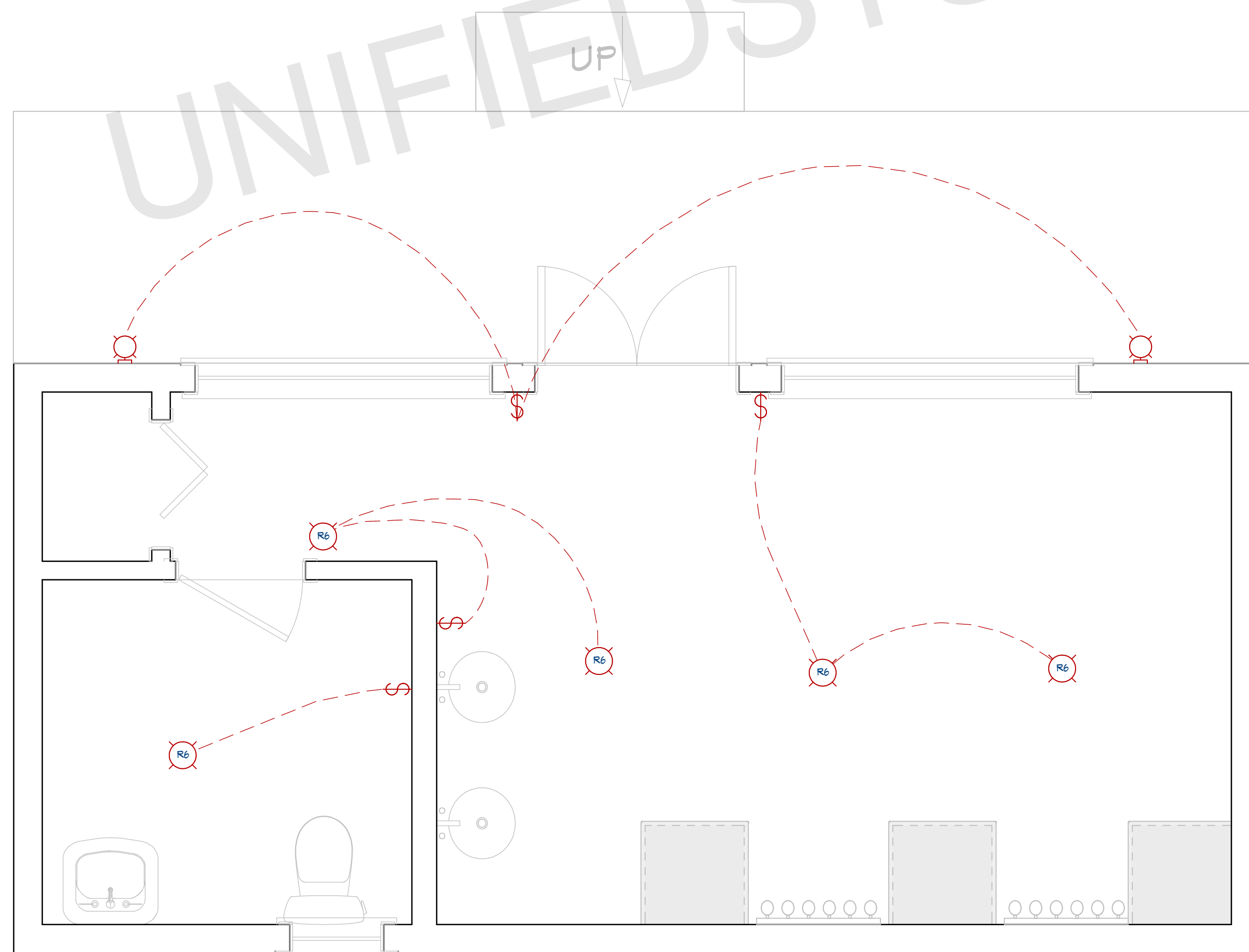
8735 Dunwoody Place
#6694, Atlanta, GA 30350
unifiedstudioarchitect.com
Ph: 302 889 1886

SHEET NUMBER

A09



POWER PLAN
1/2"=1'



LIGHTING PLAN
1/2"=1'

ELECTRICAL LEGEND

- 110V OUTLET (RECEPTACLES)
- CONNECTION
- GFCI OUTLET
- HOME RUN
- ELECTRICAL PANEL
- LED LIGHT
- WALL MOUNTED LIGHT
- SWITCHES
- TV OUTLET
- TELEPHONE OUTLET

NOTE:

BRANCH CIRCUITRY AND PANEL DESIGNATIONS TO BE DESIGNED AND INSTALLED BY CERTIFIED LOCAL ELECTRICIAN

ABBREVIATIONS AND CALLOUTS (TYP.)

Δ	DELTA	IU-X	INDOOR UNIT
γ	WYE	J/JB	JUNCTION BOX
A	AMPS	kcmil	THOUSAND CIRCULAR MIL
AC	ALTERNATING CURRENT	KEF-X	KITCHEN EXHAUST FAN
AD	ACCESS DOOR	kW	KILOWATT
AFCI/AFI	ARC FAULT CIRCUIT INTERRUPTER	L-X	LOUVER (POWERED)
AFF	ABOVE FINISH FLOOR	LED	LIGHT EMITTING DIODE
AHU-X	AIR HANDLING UNIT	MAU-X	MAKE UP AIR UNIT
AIC	AMPERE INTERRUPTING CAPACITY	MAX	MAXIMUM
AJD	ADJUSTABLE	MCA	MAX. CIRCUIT AMPERAGE
AL	ALUMINUM	MCB	MAIN CIRCUIT BREAKER
AOR	ARCHITECT OF RECORD	MCC	MOTORIZED CONTROL CENTER
ATS	AUTOMATIC TRANSFER SWITCH	MIN	MINIMUM
BC-X	BRANCH CONTROLLER	MIU-X	MULTI-SPLIT INDOOR UNIT
BKR	BREAKER	MLO	MAIN LUGS ONLY
BOD	BASIS OF DESIGN	MOCB	MAX. OVERCURRENT PROTECTION
CB	CIRCUIT BRANCH	MOU-X	MULTI-SPLIT OUTDOOR UNIT
CLG	CEILING	MOD	MOTORIZED DAMPER
COMP-X	COMPRESSOR	N	NEUTRAL
CU	COPPER	N/A	NOT APPLICABLE
CU-X	CONDENSING UNIT	NC	NORMALLY CLOSED
DC	DIRECT CURRENT	NO	NORMALLY OPEN
DIM	DIMMER	OU-X	OUTDOOR UNIT
DWGS	DRAWINGS	PNL	PANEL
EDH	ELECTRICAL DUCT HEATER	PIU-X	POWERED INDUCTION UNIT
EF-X	EXHAUST FAN	RMS	ROOT MEAN SQUARE
EOR	ENGINEER OF RECORD	RTU-X	ROOFTOP UNIT
EX	EXISTING	SF	SQUARE FEET
FA	FIRE ALARM	SWBD	SWITCHBOARD
FAA	FIRE ALARM ANNUCIATOR PANEL	TP	TAMPER PROOF
FACP	FIRE ALARM CONTROL PANEL	TV	TELEVISION
FCU-X	FAN COIL UNIT	TYP	TYPICAL
FD	FIRE DAMPER	UG	UNDERGROUND
FSD	FIRE/SMOKE DAMPER	UH-X	UNIT HEATER (ELECTRIC)
FT	FEET	V	VOLTS
G/GRND	GROUND	VA	VOLT-AMPERES
GEN	GENERATOR	VAV-X	VARIABLE AIR VOLUME UNIT
GFCI/GFI	GROUND FAULT CIRCUIT INTERRUPTER	VLD	VOLUME DAMPER (MANUAL)
GUH-X	GAS UNIT HEATER	VFD	VARIABLE FREQUENCY DRIVE
H/C	HEATING COIL	W	WATTS
HP	HORSEPOWER	W/	WITH
HP-X	HEAT PUMP	WH-X	WATER HEATER
HR	HOUR	WP	WEATHERPROOF
HZ	HERZ	XFMR	TRANSFORMER
IG	ISOLATED GROUND	XP	EXPLOSION PROOF
IN	INCHES	Z	IMPEDANCE

ARCHITECT SEAL:

ELECTRICAL PLAN

SCALE @ 24" X 36"

DATE: 10-16-2024

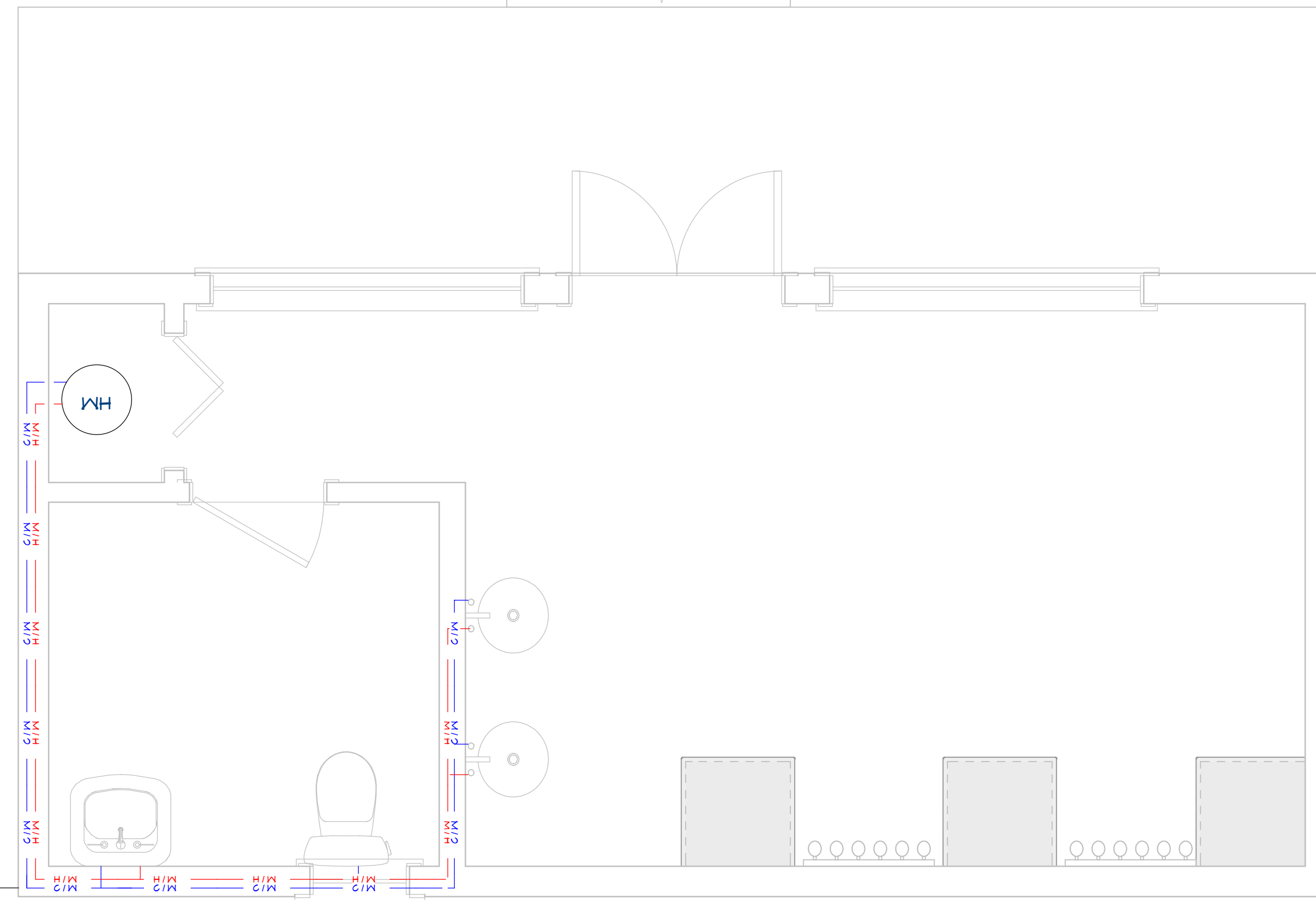
DRAWN BY: AK

8735 Dunwoody Place
#6694, Atlanta, GA 30350
unifiedstudioarchitect.com
Ph: 302 889 1886

SHEET NUMBER

A10

FROM CITY
DOMESTIC WATER PIPELINE



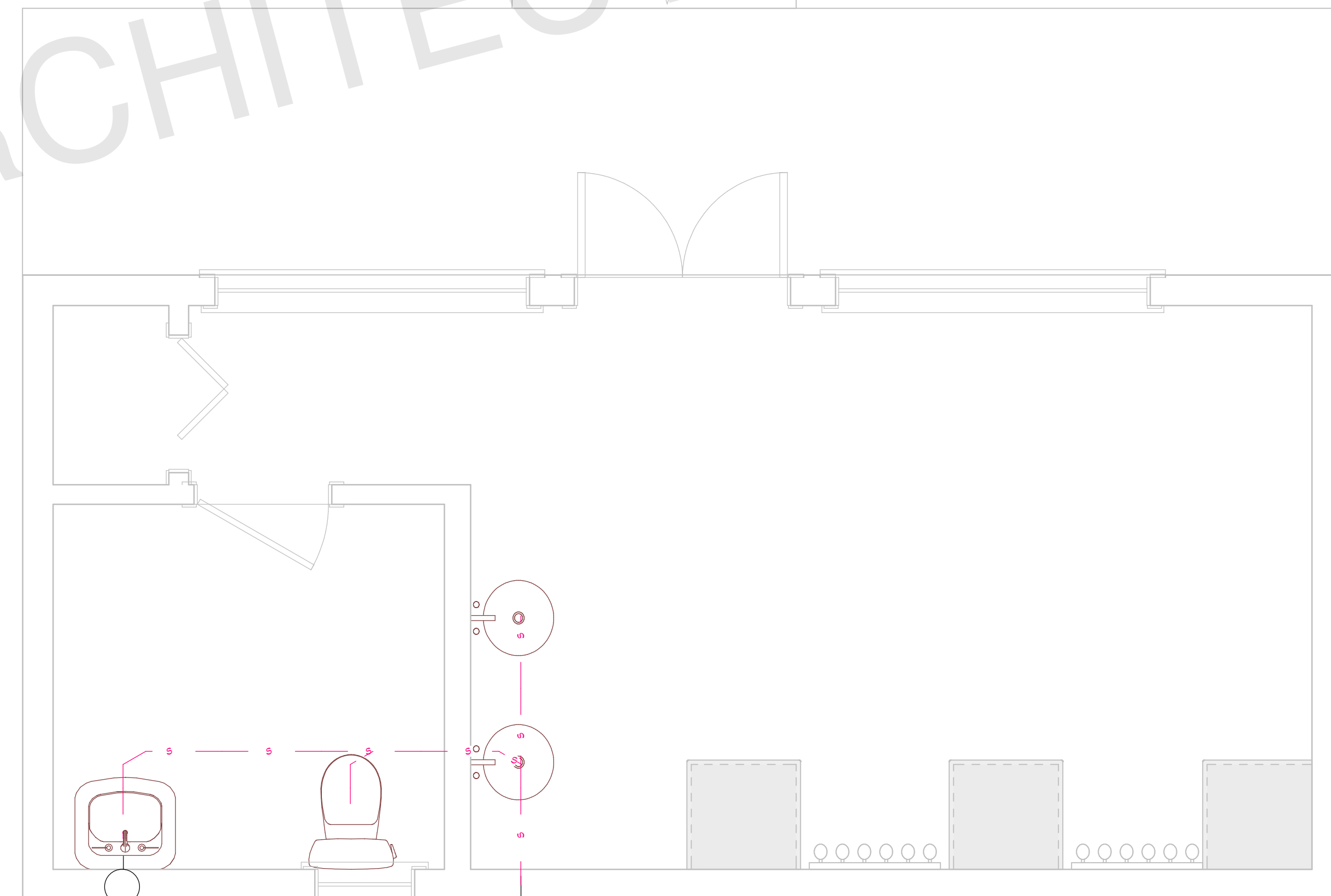
DOMESTIC PIPELINE PLAN
1/2"=1'

General Notes:

- Selection of Cleanout Locations:
- 1. The contractor shall select and provide suitable cleanout locations as per the plumbing layout and site conditions.
- 2. Cleanouts must be installed at the base of all vertical soil and waste stacks.
- 3. Cleanouts should be located at every change in direction greater than 45 degrees and at intervals not exceeding 100 feet for horizontal drainage piping.
- 4. Cleanouts must be easily accessible for maintenance and inspection.
- 5. Exterior cleanouts should be placed at least 3 feet from the foundation wall.
- 6. All cleanout locations must comply with local plumbing codes and be approved by the plumbing inspector.
- 7. Ensure cleanouts are capped and properly sealed when not in use.
- 8. Contractor to verify and coordinate the final cleanout locations with the site supervisor and plumbing engineer.

PLUMBING LEGEND	
SYMBOL	DESCRIPTION
— HW —	HOT WATER, COPPER TYPE L, OR CPVC
— W —	COLD WATER, COPPER TYPE L, OR PVC
— SS —	WASTE, PVC, SCHEDULE 40 (DWV)
— — —	VENT, (DWV)

PIPE SIZES:	
Cold Water Pipe Line	= 3/4"
Hot Water Pipe Line	= 1/2"
Sewer Pipe	= 2.5"
Main sewer Pipe	= 3"
Vent	= 2"



AIR VENT

TO EXISTING SEWER LINE

SEWER PLAN
1/2"=1'

ARCHITECT SEAL:

**PLUMBING
PLAN**

SCALE @ 24" X 36"

DATE: 10-16-2024

DRAWN BY: AK

8735 Dunwoody Place
#6694, Atlanta, GA 30350
unifiedstudioarchitect.com
Ph: 302 889 1886

SHEET NUMBER

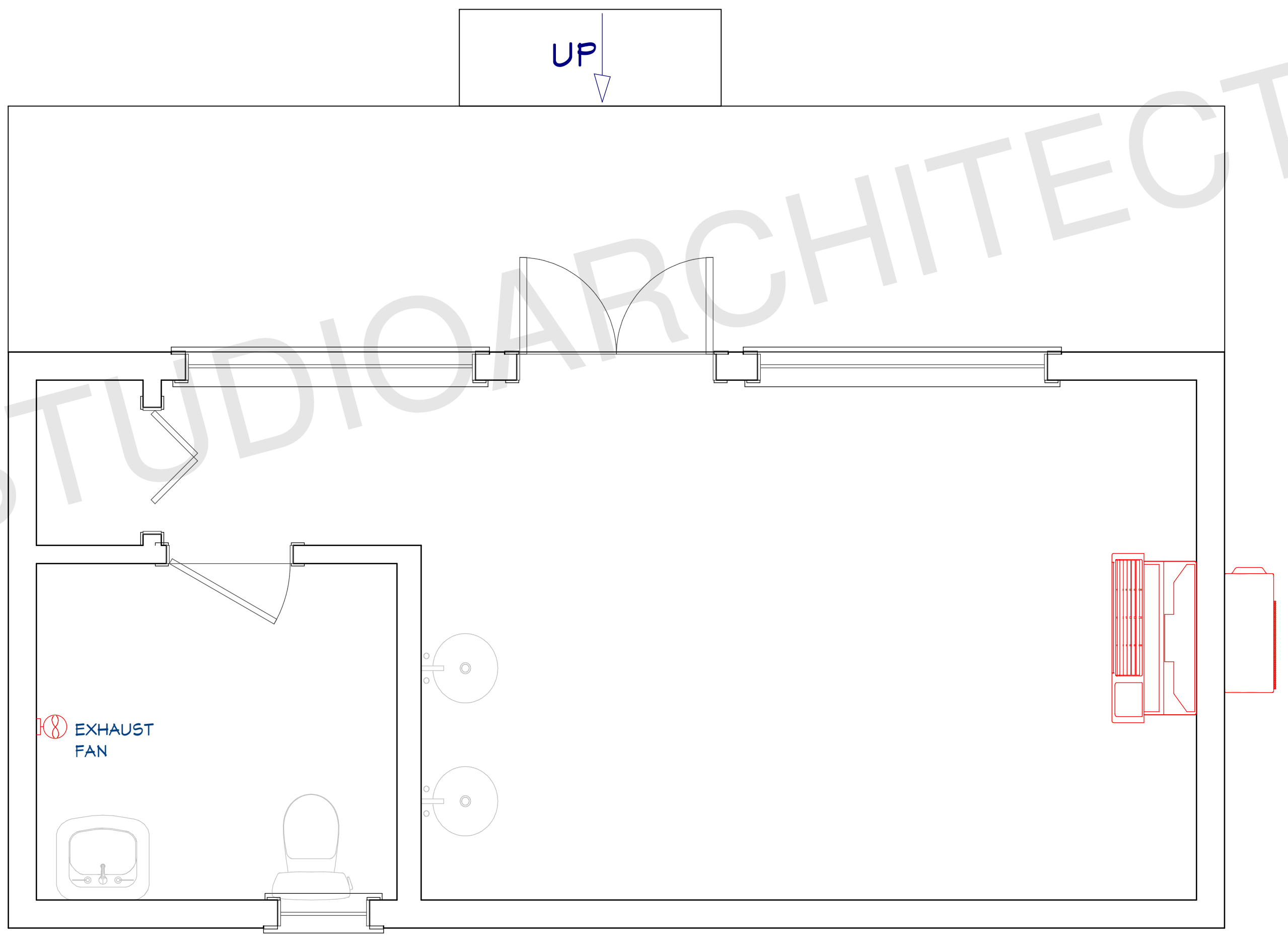
E02

ABBREVIATIONS

AD	ACCESS DOOR	KW	KILOWATT
AFF	ABOVE FINISH FLOOR	LAT	LEAVING AIR TEMPERATURE
AHU-X	AIR HANDLING UNIT	LBS	POUNDS
AJD	ADJUSTABLE	LD	LINEAR SLOT DIFFUSER
AOR	ARCHITECT OF RECORD	LF	LINEAR FEET
BD	BACKDRAFT DAMPER	LR	LINEAR SLOT RETURN
BOD	BASIS OF DESIGN	MA	MAKE UP AIR
BTU	BRITISH THERMAL UNIT	MAU-X	MAKE UP AIR UNIT
BTU/HR	BRITISH THERMAL UNIT PER HOUR	MAX	MAXIMUM
C/C	COOLING COIL	MBH	1,000 BTH/HR
CD	CEILING DIFFUSER	MCA	MAX. CIRCUIT AMPERAGE
CFM	CUBIC FEET PER MINUTE	MIN	MINIMUM
CLG	CEILING	MIU-X	MULTI-SPLIT INDOOR UNIT
COMP-X	COMPRESSOR	MOCP	MAX. OVERCURRENT PROTECTION
CONC	CONCRETE	MOD	MOTORIZED DAMPER
COND	CONDENSATE	MOU-X	MULTI-SPLIT OUTDOOR UNIT
CU-X	CONDENSING UNIT	MD	MANUAL DAMPER
dB	DECIBEL	NO	NORMALLY OPENED
DB	DRY BULB	NC	NORMALLY CLOSED
Ø	DIAMETER	N/A	NOT APPLICABLE
DD	DUCT MOUNTED AIR DIFFUSER	OA	OUTSIDE AIR
DN	DOWN	OC	ON CENTER
DR	DUCT MOUNTED AIR RETURN	OU-X	MINI-SPLIT OUTDOOR UNIT
DWGS	DRAWINGS	PIU-X	POWERED INDUCTION UNIT
EA	EXHAUST AIR	RA	RETURN AIR
EAT	ENTERING AIR TEMPERATURE	RG	RETURN AIR GRILLE
EDH	ELECTRICAL DUCT HEATER	RH	RELATIVE HUMDITY
EF-X	EXHAUST FAN	RPM	ROTATIONS PER MINUTE
EG	EXHAUST GRILLE	RTU-X	ROOFTOP UNIT
EOR	ENGINEER OF RECORD	SA	SUPPLY AIR
ESP	EXTERNAL STATIC PRESSURE	SF	SQUARE FEET
EX	EXISTING	SP	STATIC PRESSURE
EXH	EXHAUST	SR	SUPPLY REGISTER
FCU-X	FAN COIL UNIT	SS	STAINLESS STEEL
FD	FIRE DAMPER	TG	TRANSFER GRILLE
FSD	FIRE/SMOKE DAMPER	TYP	TYPICAL
FT	FEET	UC	UNDERCUT
H/C	HEATING COIL	UH-X	UNIT HEATER
HP	HORSEPOWER	VAV-X	VARIABLE AIR VOLUME UNIT
HP-X	HEAT PUMP	VFD	VARIABLE FREQUENCY DRIVE
HR	HOUR	W/	WITH
IN	INCHES	WET BULB	WET BULB
IU-X	MINI-SPLIT INDOOR UNIT	WC	WATER COLUMN
KEF-X	KITCHEN EXHAUST FAN	WG	WATER GAUGE

MECHANICAL LEGEND

CEILING AIRFLOW	DIFFUSER, REGISTER OR LOUVER TYPE - REFER TO THE SCHEDULE AIRFLOW (IN CFM)
RECTANGULAR DUCTWORK	RECTANGULAR DUCTWORK
ROUND DUCTWORK	ROUND DUCTWORK
DUCTWORK TRANSITION	DUCTWORK TRANSITION
TURNING VANES AT DUCT ELBOW	TURNING VANES AT DUCT ELBOW
SUPPLY DIFFUSER	SUPPLY DIFFUSER
RETURN GRILLE	RETURN GRILLE
EXHAUST GRILLE OR EXHAUST FAN	EXHAUST GRILLE OR EXHAUST FAN
SIDE WALL OR DUCT MOUNTED SUPPLY	SIDE WALL OR DUCT MOUNTED SUPPLY
SIDE WALL OR DUCT MOUNTED RETURN	SIDE WALL OR DUCT MOUNTED RETURN
FIRE DAMPER (RATING PER PENETRATED ASSEMBLY RATING)	FIRE DAMPER (RATING PER PENETRATED ASSEMBLY RATING)
SMOKE DAMPER	SMOKE DAMPER
COMBINATION FIRE AND SMOKE DAMPER (RATING PER PENETRATED ASSEMBLY RATING)	COMBINATION FIRE AND SMOKE DAMPER (RATING PER PENETRATED ASSEMBLY RATING)
MANUAL VOLUME DAMPER	MANUAL VOLUME DAMPER
FLEXIBLE DUCTWORK - LIMITED TO 6' LENGTH AT DIFFUSER, GRILLES AND REGISTERS	FLEXIBLE DUCTWORK - LIMITED TO 6' LENGTH AT DIFFUSER, GRILLES AND REGISTERS
THERMOSTAT - 48" A.F.F.	THERMOSTAT - 48" A.F.F.
HUMIDISTAT - 48" A.F.F.	HUMIDISTAT - 48" A.F.F.
DUCT DOWN	DUCT DOWN
DUCT UP	DUCT UP
FLEXIBLE CONNECTION IN DUCTWORK. IF NOT SHOWN, IT SHALL BE LOCATED AT EACH DUCT CONNECTION TO MECHANICAL EQUIPMENT	FLEXIBLE CONNECTION IN DUCTWORK. IF NOT SHOWN, IT SHALL BE LOCATED AT EACH DUCT CONNECTION TO MECHANICAL EQUIPMENT
CONDENSATE LINE. IF NOT SHOWN, ROUTING BY CONTRACTOR TO CODE	CONDENSATE LINE. IF NOT SHOWN, ROUTING BY CONTRACTOR TO CODE
REFRIGERANT LINE SETS (SUCTION&LIQUID LINE). IF NOT SHOWN, ROUTING BY CONTRACTOR TO CODE	REFRIGERANT LINE SETS (SUCTION&LIQUID LINE). IF NOT SHOWN, ROUTING BY CONTRACTOR TO CODE
EXTERNAL OR INTERNAL DUCT INSULATION PER SPECIFICATION	EXTERNAL OR INTERNAL DUCT INSULATION PER SPECIFICATION



MECHANICAL PLAN
1/2"=1'

ARCHITECT SEAL:

MECHANICAL PLAN

SCALE @ 24" X 36"

DATE: 10-16-2024

DRAWN BY: AK

8735 Dunwoody Place
#6694, Atlanta, GA 30350
unifiedstudioarchitect.com
Ph: 302 889 1886

SHEET NUMBER

E03

SHEET NUMBER

P02

SHEET NUMBER

P02

Unified
Studio Architect
8735 Dunwoody Place
#6694, Atlanta, GA 30350
unifiedstudioarchitect.com
Ph: 302 889 1886

SCALE @ 24" X 36"

DATE: 10-16-2024

DRAWN BY: AK

ARCHITECT SEAL:



SHEET NUMBER

P03

SHEET NUMBER

P03

Unified
Studio Architect
8735 Dunwoody Place
#6694, Atlanta, GA 30350
unifiedstudioarchitect.com
Ph: 302 889 1886

SCALE @ 24" X 36"

DATE: 10-16-2024

DRAWN BY: AK

ARCHITECT SEAL:

SHEET NUMBER

P04

SHEET NUMBER

P04

Unified
Studio Architect
8735 Dunwoody Place
#6694, Atlanta, GA 30350
unifiedstudioarchitect.com
Ph: 302 889 1886

SCALE @ 24" X 36"

DATE: 10-16-2024

DRAWN BY: AK

ARCHITECT SEAL:



SHEET NUMBER

P05

SHEET NUMBER

P05

Unified
Studio Architect
8735 Dunwoody Place
#6694, Atlanta, GA 30350
unifiedstudioarchitect.com
Ph: 302 889 1886

SCALE @ 24" X 36"

DATE: 10-16-2024

DRAWN BY: AK

ARCHITECT SEAL: